

Occasionally we are asked to supply a driver where the identity of the touch screen is unknown. This document suggests ways of identifying an unknown controller in use.

Most touch screens that we deal with are connected to monitors. However, it is unlikely the monitor manufacturer is also the manufacturer of the touch screen. This will almost certainly have been supplied from a third party touch screen manufacturer.

It is possible that we don't support a given touch screen and we can add support if we are supplied relevant technical information as described in our [Controller Support document](#).

Here are the various ways you might be able to identify the touch screen in use:

- Sometimes the monitor/PC make will identify the touch screen in use, for example;

(Hyperlinks to product guides correct at time of adding entry).

Manufacturer	Model	UPDD touch controller definition
All-in-one computers	Multi-touch	
Gateway	ZX 4800-2	Quanta Computer, USB
All-in-one computers	Single-Touch	
Asus	ET20xxT	IDEACO IDC 6681 (14/12 – unsupported as yet)
Medion	Akoya P4010	eTurboTouch, 22b8, USB
Touch Monitors	Multi-Touch	
Acer	T230H (Dual Touch)	Quanta Computer, USB
Dell	SX2210T (Multi-touch)	NextWindow, MT1950, USB – support due March 2010
Hewlett Packard	L2105TM (Dual Touch)	Quanta Computer, USB
Iiyama	T2250MTS (Dual Touch)	Quanta Computer, USB
Touch Monitors	Single-Touch	
3M	M150 , ChassisTouch	3M, EXII, USB/Serial
	CT150 , M150HB M170	3M, EXII, USB 3M, EXII, USB/Serial or 3M, SC500, USB/Serial
Asus	Eee Top T91MT	Asus, Eee Top, USB IDEACO IDC 6680 (14/12 – unsupported as yet)
Bcom	CivilNote Mini-notebook	Gunze, USB or Gunze, AHL, Serial
Clevo	TN120	TouchPack, Resistive, USB
CTX	PV500BT	Panjit, TouchSet, Serial
Comtec	151A with touch	Dynapro SC4 Serial
Cartft.com	CTF845-5	HIDTouch, USB – (Vid – 1ddb, Pid = 1)
Davi	DAVI-nn10A/G	3M SC4 Serial (and USB?)
Data View Co.	DAVI-1330b	Web links imply there may be other touch options, e.g.ELO
Dell	E153FPT E157FPT	3M Microtouch USB ELO, SmartSet USB and Serial
Dynamix	Resistive touch screens	eGalax USB
Earth		DMC Fit 10 serial and USB
Elo	3000 Series Entuitive	3M Capacitive EloTouch, Accutouch 3000, USB
	1725L Accutouch USB 1749	EloTouch, 2700 Intellitouch USB and Serial
Eizo	L362	3M Touchsystems, EXII, USB
Gigabyte	M912	Salt, Penmount 5100 Series (14e1/6000), USB
GVision	P12DS series P15BX series L15AX series P17BH series P19BH series	Groovy Touch Groovy Touch USB and Serial 3M / ELO / Groovy Touch Serial 3M / ELO / HIGGSTEC USB and Serial 3M / ELO / HIGGSTEC USB and Serial
IBM	9497 T86A 6309 P76 9527 T32	3M/Microtouch, SMT3/EXII, USB 3M/Microtouch, SMT3/EXII, Serial 3M/Microtouch, SMT3/EXII, Serial
Intelliworxx	Texlon – VoiceTablet	Nissha, NIS/RC-872R, Bus – Use UPDD version 3.x.x only
Iiyama	INT3819TS	EloTouch, 23xx/25xx Intellitouch, Serial
LG Monitors	All recent models - Some later models	ITM Touch, USB (VID = 403) or Serial ITM Touch, LG, USB (VID = E316) or Serial
	LG L1510SF LG 1730SF	ITM Touch, USB (VID = 403) ITM Touch, USB (VID = 403)
LG monitors with ITM touch screens ships with UPDD driver for Windows. Click here for production software	ProLite B380C	3M/Microtouch, SMT3/EXII, Serial
Lilliput		EGalax, TP001 (PID1), USB
Neovo	TS-15S	EloTouch Serial
NEC	MultiSync LCD 1850E	EloTouch Serial

	MultiSync LCD175VXM+	eGalax USB
	Accusync Accusync LCDn2Vx-TC Example - ASLCD72VX-BK-TC	EloTouch Serial and USB 3M Touchsystems, EXII, USB (C = Capacitive)
	Accusync LCDn2Vx-TR	3M Touchsystems, SC500, USB (R = Resistive)
	Accusync LCD73VX-BK LCD4000	3M Touchsystems, EXII, USB (C = Capacitive) ELO Smartset USB
	LCD1560nx	We think there are many touch overlays for this monitor but we have supplied drivers for 3M Touchsystems, DST, USB We have supplied 3M Touchsystem, SCxxx and EXII serial for this monitor.
Planar	Planar Drivers page and Planar Monitor Archive	
	PT120	Gunze, AHL, Serial
	PT150MU	Fujitsu, 055x series (pid511), USB
	PT150M	Fujitsu, Serial
	PT170MU	Fujitsu, 055x series (pid511), USB
	PT170M	Fujitsu, Serial
	LA1500RTR	3M Touchsystems, SC500, USB
	LA1500RTC	3M, EXII, USB
	LA1710RTR	Fujitsu, 055x series (pid511), USB ????
	LA1710RTC	Or 3M Touchsystems, SC500, USB
	LA1910RTC	3M, EXII, USB
	LXnn01PTI	IRTouch, USB
	PT1503NT	EloTouch, 23xx/25xx Intellitouch, Serial
	PT191MU	3M, EXII, USB
	PT1500M	3M Touchsystems, SC500, Serial
	PT1500MU	3M Touchsystems, SC500, USB
	PT1500MX	eGalax, USB
	PT1501M	3M, EXII, Serial
	PT1501MU	3M, EXII, USB
	PT1510MX	Gunze, AHL, Serial / USB
	PT1510MTX	eGalax, USB
	PT1700M	3M Touchsystems, SC500, Serial
	PT1700MU	3M Touchsystems, SC500, USB
	PT1701M	3M, EXII, Serial
	PT1701MU	3M, EXII, USB
	PT1710MX	Gunze, AHL, Serial / USB
	PT1915MU	General Touch, USB
Mimo	740	e2i, USB
The mimo ships with UPDD driver for Windows. Click here for production software		
MiTAC	QMP-150/T	Quick, Resistive Rev 1.2, Serial
	15RX-TA	
Rockwell	1550M , 1750M , 1950M	Panjit, Serial
Samsung	173VT	3M/Microtouch, SMT3/EXII, Serial
Slimage	400A	EloTouch, Accutouch, Serial
Sanyo	TK15A4T TK15A4TC TK15A4TS	3M/Microtouch, SMT3/EXII, Serial 3M/Microtouch, SMT3/EXII, Serial EloTouch, 23xx/25xx Intellitouch, Serial
Shuttle	X50	Egalax, USB
SilverStone	CW03-MT	TouchPack, Resistive, USB
Sony	Vaio ux380n	Gunze, New, USB
Tidal Power	Palmax PD-1nnn	Palmax, Serial (uses a Trittech TR88L803 ADC)
Technologies Inc		
Xenarc	USB	EGalax, TP001 (PID1), USB
Zalman	HD160XT	DigiTech, DTR-02U, USB

- Monitor product literature or specification may identify the manufacturer or give clues, such as 8 wire touch screen, of which there are only a few in production.
- Touch manufacturer's labels may be attached to the base or back of the monitor.
- Supplied drivers may identify the manufacturer or touch screen.
- Contacting the technical department of the monitor manufacturer for advice.

Depending on the port in use we may be able to identify the device from information gleaned from the system:

PS/2	If using a PS/2 port you will need to identify from the suggestions above.
Serial	If using a serial port the best option is to identify from the suggestions above. Failing that, there is a data scope program available from the Utilities page of our web site, which can be used to identify the touch data packet seen at the serial port. We can sometimes identify the controller solely based on this data, which can be saved to a log and emailed to us.
USB	If using a USB controller, which by definition is a Plug and Play device, there are ways of identifying the controller from the PnP information passed from the device to the system. Given this information we can identify the touch controller in use from our database of touch controller settings. The required information is the Vendor id (VID), Product id (PID) and, if available, the manufacturer's id, which can be extracted as follows:

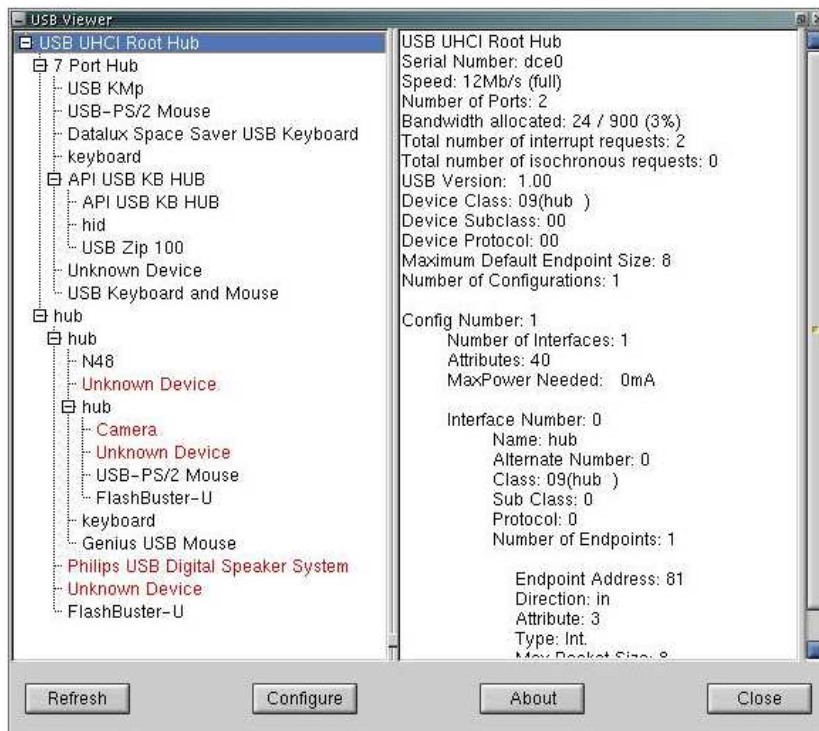
Linux

To view the USB vendor and product ids in Linux you can use a graphical viewer or the CAT / LSUSB commands as described below. There may be other methods.

Graphical viewer

Use a graphical USB Viewer available on the web (Google 'usb view download'), such as the one at <http://www.kroah.com/linux/usb/>

When run, this will show the USB devices, as shown in the following example:



Cat Command

Open a terminal window and type `cat /proc/bus/usb/devices`. This is best performed with all other USB devices unplugged as sometimes it is unclear which device is which, especially if the description string has not been implemented in the device.

Typically, the output will be in the format shown below. For clarity, the USB touch screen is shown in bold, but does not appear highlighted in the actual output. The VID = 0AFA and the PID = 03E8. The manufacturer/controller id = TSC-10 DMC.

```
T: Bus=01 Lev=01 Prnt=01 Port=00 Cnt=01 Dev#= 3 Spd=1.5 MxCh= 0
D: Ver= 1.00 Cls=ff(vend.) Sub=00 Prot=ff MxPS= 8 #Cfgs= 1
P: Vendor=0afa ProdID=03e8 Rev= 1.10
S: Manufacturer=TSC-10 DMC
C:* #Ifs= 1 Cfg#= 1 Atr=a0 MxPwr=100mA
I: If#= 0 Alt= 0 #EPs= 1 Cls=ff(vend.) Sub=ff Prot=ff Driver=(none)
E: Ad=81(I) Atr=03(Int.) MxPS= 5 IvL= 10ms
T: Bus=01 Lev=01 Prnt=01 Port=01 Cnt=02 Dev#= 2 Spd=1.5 MxCh= 0
D: Ver= 1.10 Cls=00(>ifc ) Sub=00 Prot=00 MxPS= 8 #Cfgs= 1
P: Vendor=045e ProdID=0039 Rev= 3.00
S: Manufacturer=Microsoft
S: Product=Microsoft 5-Button Mouse with IntelliEye(TM)
C:* #Ifs= 1 Cfg#= 1 Atr=a0 MxPwr=100mA
I: If#= 0 Alt= 0 #EPs= 1 Cls=03(HID ) Sub=01 Prot=02 Driver=hid
E: Ad=81(I) Atr=03(Int.) MxPS= 4 IvL= 10ms
```

Note: On SuSE 10.1 systems (and possibly others) the USB file system isn't enabled by default. This should be enabled by editing the file `/etc/fstab` and change the line that says:

```
usbfs /proc/bus/usbfs noauto 00
to
usbfs /proc/bus/usbfs auto 00 and then reboot your system.
```

This is required to get the output of `cat /proc/bus/usb/devices`

LSUSB command

If the optional USBUTILS package is installed on your system you can also obtain a list of USB devices using the LSUSB command.

The USB devices are listed in the following format:

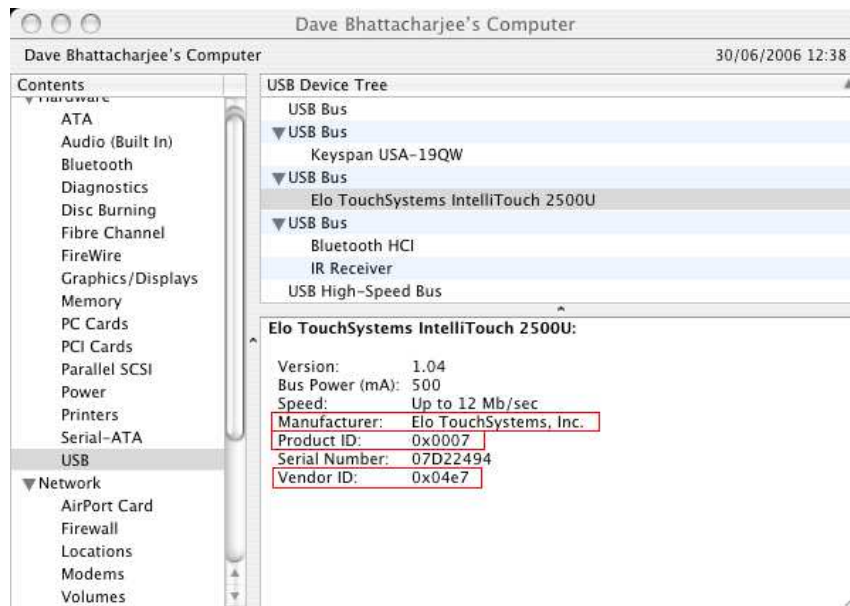
```
Bus 004 Device 001: ID 0000:0000
Bus 003 Device 001: ID 0000:0000
Bus 003 Device 002: ID 066b:2213 Linksys, Inc. WUSB12v1.1 802.11b Adapter
Bus 003 Device 003: ID 067b:2303 Prolific Technology, Inc. PL2303 Serial Port
Bus 002 Device 001: ID 0000:0000
```

Bus 002 Device 002: ID 0eef:0001 D-WAV Scientific Co., Ltd eGalax TouchScreen
 Bus 001 Device 001: ID 0000:0000

In the above example, the highlighted entry is a USB touch screen controller.

Mac OS X

To view the USB vendor and product ids in Mac OS X, run the System Profiler from the Utilities folder, expand the USB entry and locate the touch screen from the listed USB controllers, as shown:

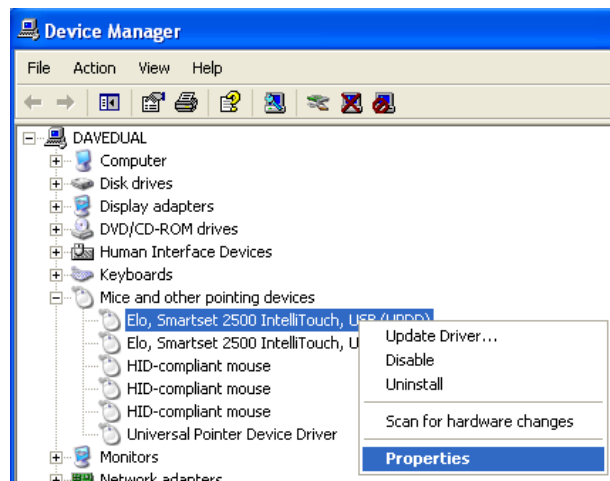


Windows

There are many ways to identify USB devices plugged into a Windows USB compliant system (98,ME,2000,XP) and here are some of the methods we use to view the USB vendor and product ids:

Device Manager

Depending on the operating system in use the device's entry in the Device Manager may show the required information. Start>Control panel>system>hardware>device manage>[section]>[device] right click on device entry, properties tab:



The following screen shots, taken on XP, show two devices with one being handled by UPDD (shown in the Mouse section) and the other HID (shown in the USB Human Interface Devices section):



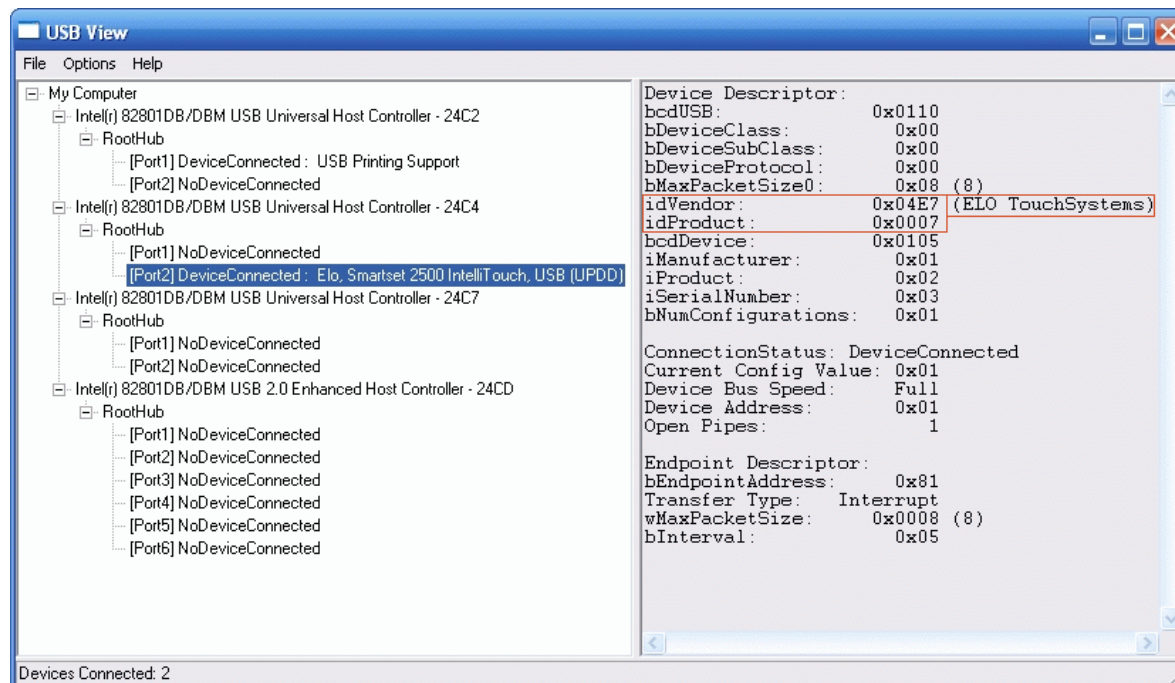
The touch controller entry also shows the serial number for the device (i.e. 07G57498)

Graphical viewer

Use a graphical USB Viewer. We have used two such viewers:

- 1) USB Deview from Nirsoft - http://www.nirsoft.net/utills/usb_devices_view.html
- 2) USB View available on the web (Google 'usb view download'), such as the one at <http://www.microsoft.com/whdc/device/stream/vidcap/UVCView.msp> (this is the same as USB viewer)

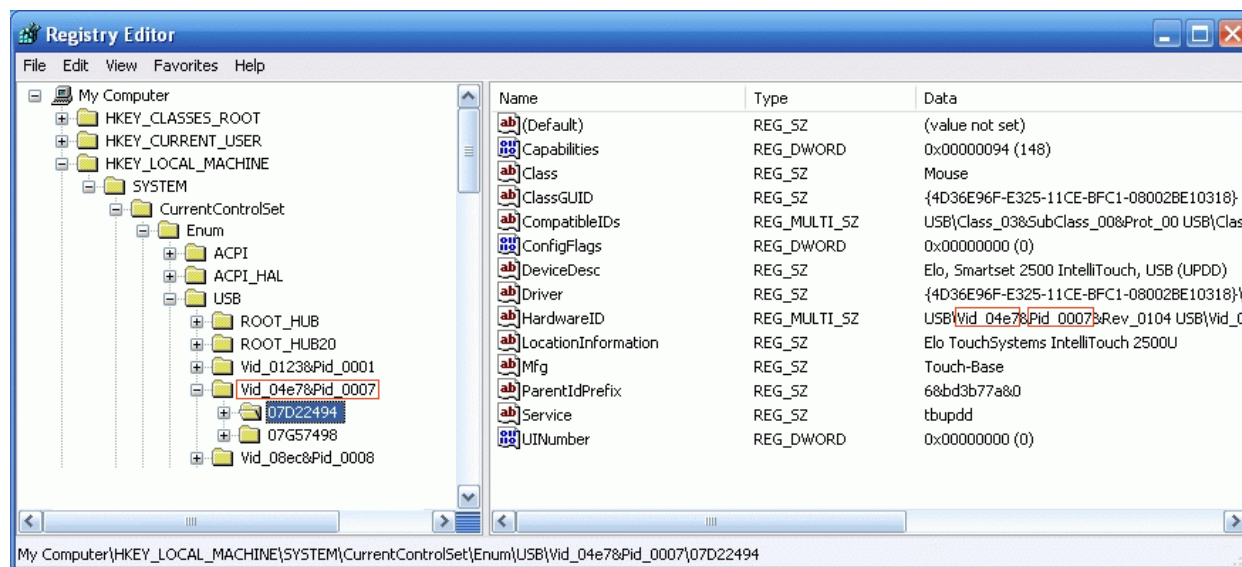
When run, this will show the USB devices, as shown in the following example:



In this example UPDD is loaded and handling the device. If the USB HID driver is handling the device it will show [Portn] : USB Human Interface Device

Registry entries

Relevant USB information is stored in the registry. With the device plugged in and using Regedit program supplied with Windows dump registry tree HKEY_LOCAL_MACHINE\SYSTEM\CurrentControlSet\Enum\USB as follows:



In the above example, two Elo Touch 2500U Intellitouch controllers are plugged in to the system and are being handled by UPDD. If HID driver is supporting the device then the DeviceDesc will show "USB Human Interface Device"

USB Vendor and Product id listings

An incomplete list is held at <http://www.linux-usb.org/usb.ids>. You can also try this web site <http://www.pcidatabase.com/>.

Contact

For further information or technical assistance please email the technical support team at technical@touch-base.com