

[General](#)[Hardware](#)[Click Mode](#)[Properties](#)[Calibration](#)[Toolbars](#)[Status](#)

General information

Software version 4.0.4 and above

Help version 1.8

Welcome to UPDD version 4. Although the underlying driver is fundamentally the same as the version 3 driver this release addresses the issue of cross-platform compatibility of the driver's utility programs. A new calibration program has also been written to remove java dependency under Mac OS X and Linux. Over the coming months we will also be enabling a number of embedded touch utilities that have been written but are not sufficiently stable for release.

A full revision history can be viewed in the UPDD Console, About box and also found on our web site [here](#).

Not all version 4 programs are available in this release as it has been necessary to release this driver to deliver support and functionality as it is implemented.

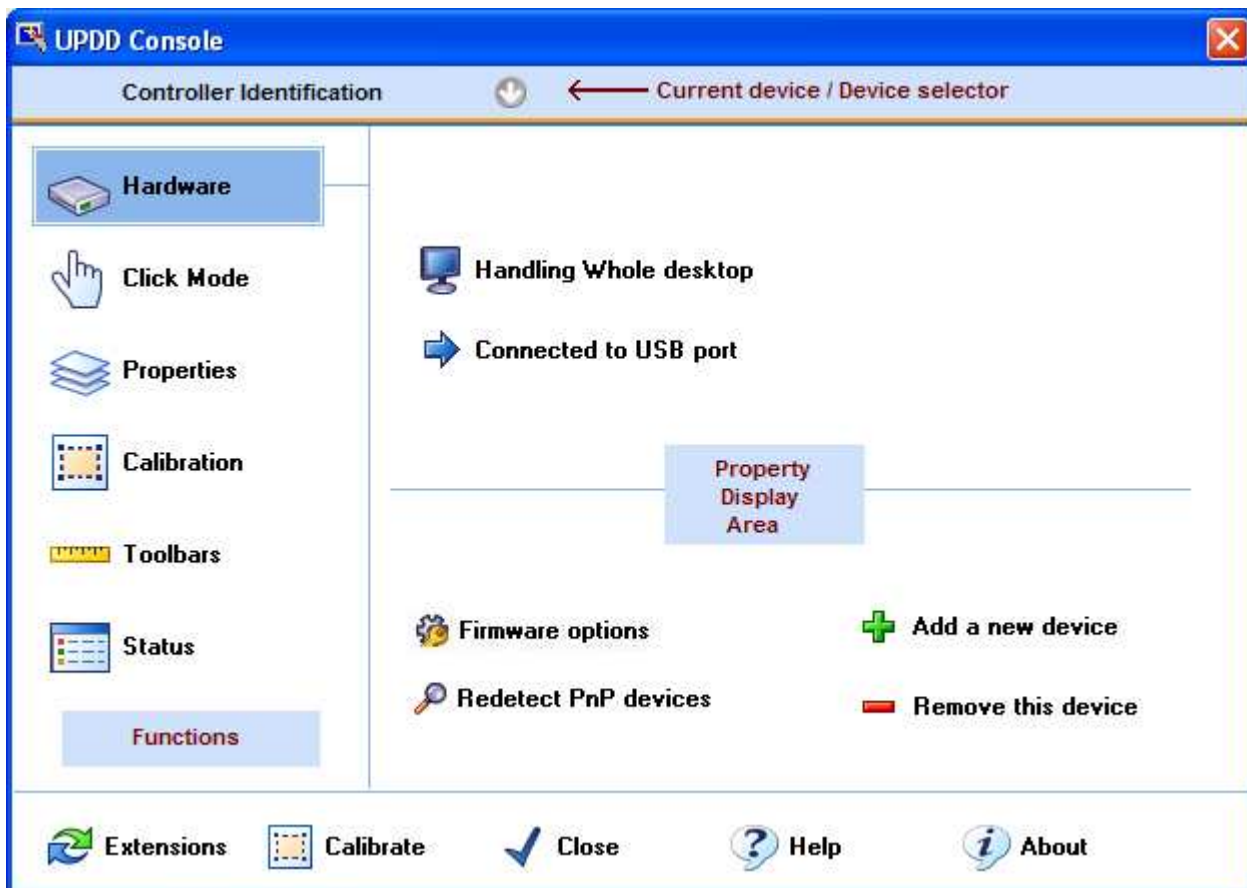
The intended UPDD suite of utility programs are as follows:

Program	Status	Description
User Console	Released	Driver's control program aimed at general, non technical, users
Calibration	Released	New calibration program
Test utility	Released	New test and draw utility
Daemon Program	Released	Background task processing: system tray functions, video rotate monitoring, PnP detection etc
Event Selector	Released	Utility to switch between two event states, normally Left and right click. Windows only.
Extensions	Under test	Touch extensions and utilities
Activator	Under development	Quick access to touch related functions
Advanced	Under development	Advanced driver and device settings for technical users
SDK assistance	Under development	UPDD SDK API programmers guide and example code
Language files	Released	Common language files are under construction and will be released as available. A completed language file will allow all utility programs to be localized to the language of the system.

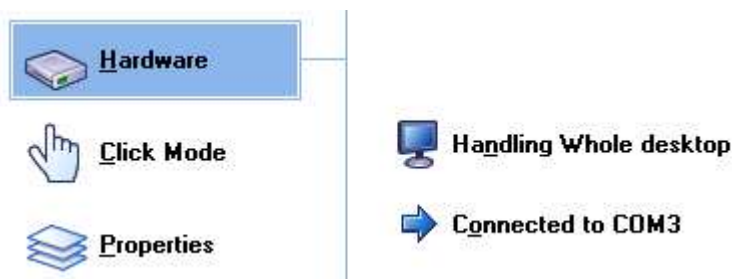
User Console

The new look console is shown below and has three main users areas; the device display/selection, the function selection and the display area. Individual functions are described in detail in the help system. **Not all functions are available across all platforms but it is our intention to make as many functions platform compatible ASAP. Where functions are not available the control will be removed from the UPDD Console.**



For most systems it is unlikely that any changes will need to be made to the driver configuration as the default settings are optimized for best performance. Great care should be made in changing any of these settings as they may have an adverse effect on the performance of the pointer device.



The console supports keyboard hotkeys (accelerator keys) via the Alt key. When selected on the keyboard the hotkeys are underlined on the given dialog, such as the example below; Alt H – Hardware, Alt C – Click Mode, Alt P – Properties.



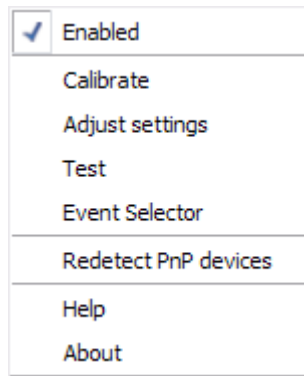
System Tray Utility

Under Windows, the UPDD daemon task offers a system tray utility ( or ) to invoke a number of UPDD pointer device functions.

If the icon shows a red X it indicates that there are no active controllers (no PnP controllers are detected or no other controllers are listed or they have been disabled (see Enabled option below). In this state the touch screen will not be working until a PnP device is connected or disabled devices are enabled.

A single click will list the menu items as described below. A double click will load the UPDD Console.

Menu	Item	Description
	Enabled	Indicates if the device is 'logically' enabled/disabled in UPDD. If a device is 'physically' disabled (e.g.



a PnP device is unplugged) the text will be shown in red. A tick indicates that the device is enabled and a cross indicates that it is disabled. For a serial controller it also shows the serial port in use. This option can be used to temporarily disable the pointer device. If more than one device is configured a sub menu lists the devices to show the enabled state. If all devices are disabled or inactive the system tray icon shows a red X to indicate to the user the touch screen will not be working.

Calibrate	Invokes the Calibration procedure
Adjust Settings	Invokes the UPDD Console
Test	Invokes the Test Utility
Event Selector	Invokes the Event Selector
Redetect PnP devices	UPDD 4.0.x only. PnP handling improved in 4.1.x so not required. Redetects UPDD supported PnP devices that may be assigned to other drivers, e.g. HID.
Help	Invokes the UPDD Help system
About	General information

Mouse Emulation

The mouse emulation modes have been renamed under this version 4 of the driver and are described in full [here](#). Mouse emulation considerations are described in detail on our web site [here](#).

Documentation

A full set of on-line documentation, covering all aspect of the UPDD software suite and related topics is available [on the web](#).

**Universal Pointer Device Driver – Version 4 – Copyright © Touch-Base Ltd 2006 - 2009
All rights reserved**